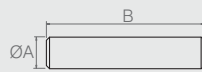


Suporte Pino

04.06.004

- Material: Polímero
- Acabamento: Preto (015)

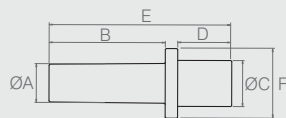


Pino

Tabela

Código	ØA	B
04.06.006	4.7	25
04.06.418	5.8	30

- Material: Aço
- Acabamentos: Zinco Branco (411) e Zinco Preto (412)

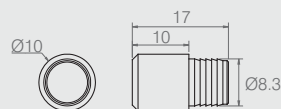
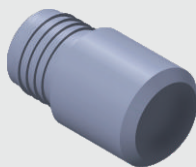


Pino Anelado

Tabela

Código	Material	ØA	B	ØC	D	E	ØF
04.06.093	Polímero	8	23.5	8	14	39	13.6
04.06.007	Polímero	6.4	18.7	7.4	8.7	29.4	11.2
04.06.292	Polímero	6	18	6	7	26.5	11
04.06.256	Aço	8	10	8	10	22	14
04.06.416	Aço	5.8	7	5.8	7	18	9
08.05.022	Aço	5	7	5	7	14.5	7

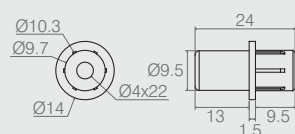
- Acabamentos: Peças em Aço - Zinco Branco (411) e Peças em Plástico - Branco (005)



Pino Ø8.3

04.06.408

- Material: Aço
- Acabamento: Zinco Branco (411)



Suporte Limitador

04.06.003

- Material: Polímero
- Acabamentos: Branco (005) e Cinza Cristal (009)