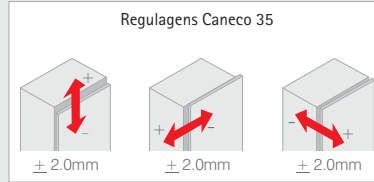


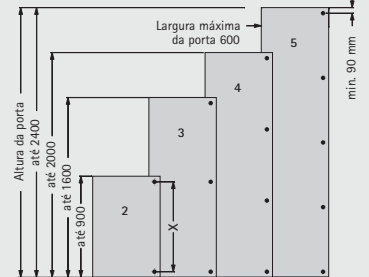
Dobradiça Caneco 35



- Material: Dobradiça e calço em aço
- Acabamento: Zinco Branco/Niquelado
- Fixação: Parafusos
- Regulagem: Tridimensional
- Ângulo de abertura: 95°

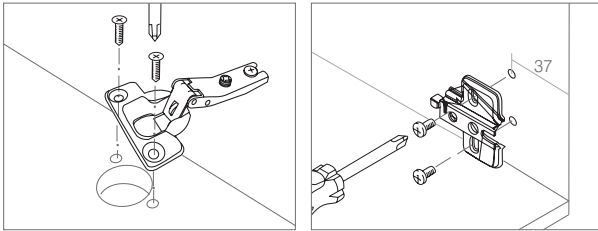


Referência de número de dobradiças por porta

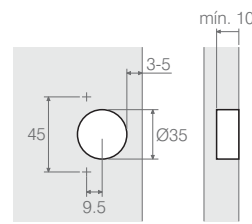


Valores de referência para chapas de 15mm de espessura e densidade 750kg/m³ podendo variar conforme instalação no móvel.

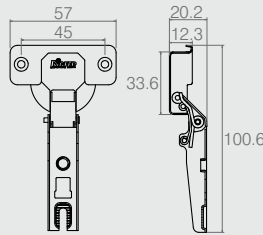
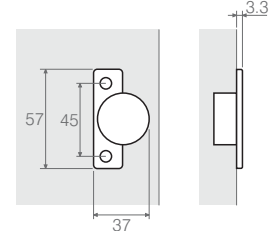
Forma de Montagem - Dobradiças Caneco 35 e Calços



Aplicação do caneco



Medidas do caneco

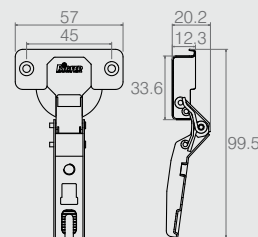
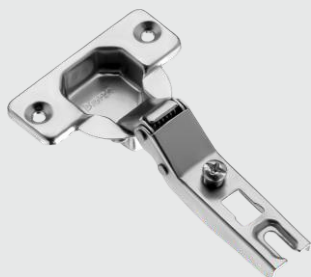


Dobradiça Caneco 35
Colo Baixo

07.05.353
com mola

07.05.432
sem mola

- Material: Aço
- Acabamentos: Zinco Branco (411) e Níquel (421)

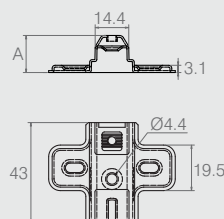
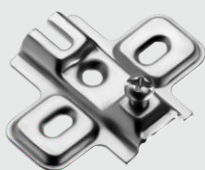


Dobradiça Caneco 35
Colo Alto

07.05.349
com mola

07.05.433
sem mola

- Material: Aço
- Acabamentos: Zinco Branco (411) e Níquel (421)



Calços para Dobradiças
Caneco 35

Tabela

Código	Tamanho	A
07.05.363	Baixo	8.1
07.05.362	Médio	13
07.05.361	Alto	15.9
07.05.380	Super Alto	18.2

- Material: Aço
- Acabamentos: Zinco Branco (411) e Níquel (421)