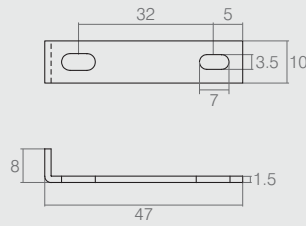
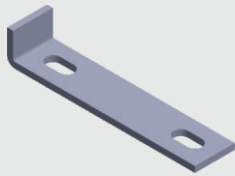


Cantoneira 24x100

04.08.450

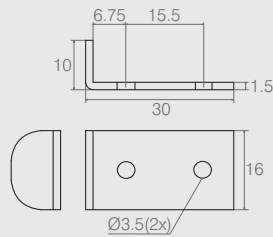
- Material: Aço 1.9
- Acabamento: Zinco Branco (411)



Cantoneira

04.08.327

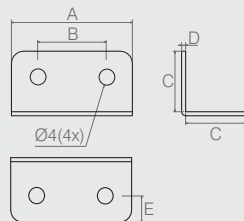
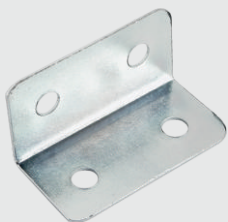
- Material: Aço 1.5
- Acabamento: Zinco Branco (411)



Freio para Gaveta

08.02.003

- Material: Aço 1.5
- Acabamentos: Zinco Branco (411) e Zinco Preto (412)

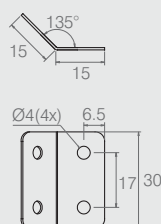


Cantoneira 4 Furos

Tabela

Código	A	B	C	D	E
08.02.039	48	32	34x34	1.2	6
04.08.027	30	17	15x15	0.7	6.5

- Material: Aço
- Acabamento: Zinco Branco (411)



Cantoneira 135°

04.08.468

- Material: Aço 0.75
- Acabamento: Zinco Branco (411)