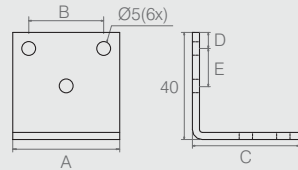


**Cantoneira**

**Tabela**

Código	A	B	C	D	E	F	G	H
04.08.241	34	34	35	1.5	5	26	4	4
08.02.290	20	25	50	1.9	10	32	5 esc. 8	5

- Material: Aço
- Acabamentos: Zinco Branco (411) e Epóxi Preto Fosco (604)

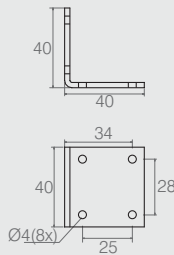


**Cantoneira 6 Furos**

**Tabela**

Código	A	B	C	D	E
04.08.236	66	32	30	10	10
08.02.102	40	28	40	6	14

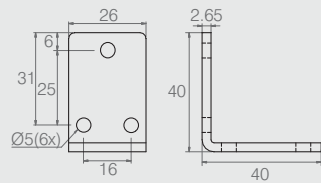
- Material: Aço 2.65
- Acabamento: Zinco Branco (411)



**Cantoneira 8 Furos**

**08.02.084**

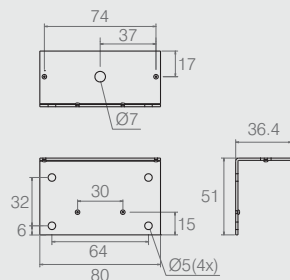
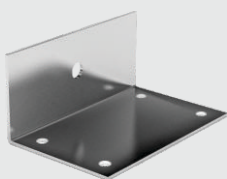
- Material: Aço 2.65
- Acabamento: Zinco Branco (411)



**Cantoneira 40x40**

**04.08.088**

- Material: Aço 2.65
- Acabamento: Zinco Branco (411)



**Cantoneira**

**04.08.288**

- Material: Aço 1.5
- Acabamento: Zinco Branco (411)