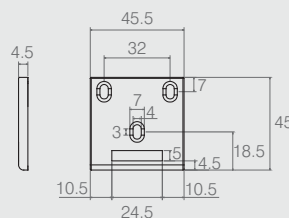
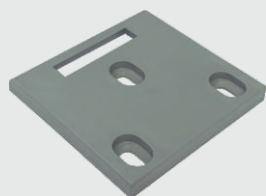


Batente para Porta

06.03.012

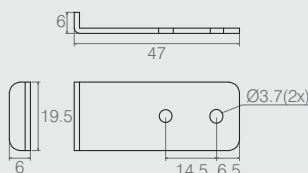
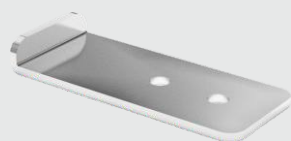
- Material: Polímero
- Acabamentos: Preto (015) e Alumínio (001)



Batente para Portas

06.03.026

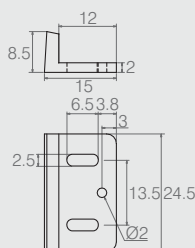
- Material: Polímero
- Acabamento: Alumínio (001)



Batente para Fechadura

08.02.009

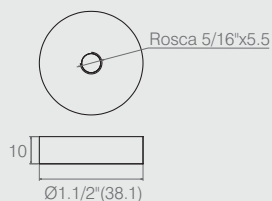
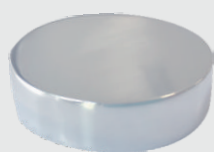
- Material: Aço 1.5
- Acabamento: Zinco Branco (411)



Batente de Vidro

08.02.046

- Material: Polímero
- Acabamentos: Preto (015), Alumínio (001), Mogno (013) e Branco (005)



Bucha de Alumínio

06.05.234

- Material: Alumínio
- Acabamento: Polido Brilho (201)