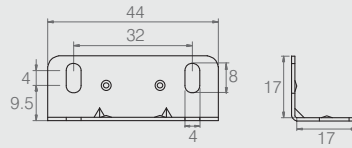


Cantoneira Tipo Batente

Tabela

Código	A	B	C	D	E	Canto
08.02.023	11	27	15	14	0.6	Reto
08.02.066	8	41	32	16	1.5	Com raio
08.02.295	8	42	32	16	0.9	Com raio
08.02.085	10	41	32	14	1.5	Com raio

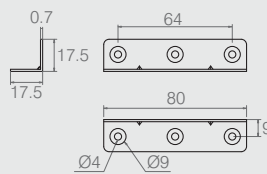
- Material: Aço
- Acabamento: Zinco Branco (411)



Cantoneira 17x17x46

04.08.190

- Material: Aço 0.7
- Acabamento: Zinco Branco (411)

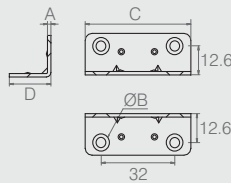


Cantoneira para Gaveta com Reforço

Tabela

Código	Descrição
08.02.021	4 furos
08.02.294	6 furos

- Material: Aço 0.7
- Acabamento: Zinco Branco (411)

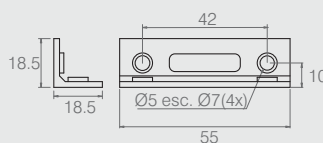
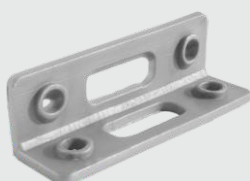


Cantoneira para Engate

Tabela

Código	A	B	C	D
04.08.219	1.5	Ø4.5 esc. 7.5	46	18
04.08.083	0.75	Ø4.5	44	17

- Material: Aço
- Acabamento: Zinco Branco (411)



Cantoneira para Gaveta

08.02.028

- Material: Polímero
- Acabamentos: Alumínio (001), Branco (005) ou Creme (055)