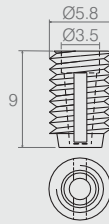
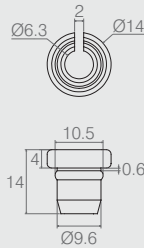

**Bucha Cilíndrica**
**Tabela**

| Código    | A  | B           | C    | D    |
|-----------|----|-------------|------|------|
| 08.03.079 | 13 | M6x12       | 10.8 | 10   |
| 08.03.141 | 11 | M6x10       | 10.7 | 10   |
| 08.03.051 | 11 | M6x10       | 10.5 | 9.8  |
| 08.03.085 | 9  | M6x8        | 10.5 | 10   |
| 08.03.170 | 9  | Soberba 6x8 | 10.5 | 10.5 |

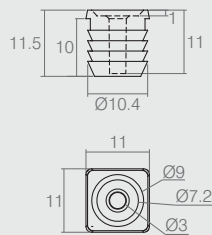
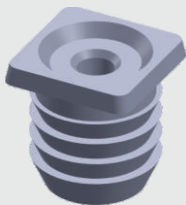
- Material: Polímero
- Acabamentos: Branco (005), Alumínio (001) e Preto (015)
- 08.03.141 e 08.03.079 para furo de Ø10.5
- 08.03.051, 08.03.085 e 08.03.170 para de Ø10


**Bucha Cilíndrica Ø5x9**
**08.03.110**

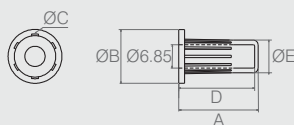
- Material: Polímero
- Acabamentos: Incolor (399) e Marfim (022)


**Bucha Eixo**
**08.03.398**

- Material: Polímero
- Acabamento: Preto (015)


**Bucha de Fixação para Dobradiça**
**08.03.358**

- Material: Polímero
- Acabamento: Branco (005)


**Bucha Fixadora**
**Tabela**

| Código    | A    | ØB | ØC   | D    | ØE   |
|-----------|------|----|------|------|------|
| 12.05.009 | 25   | 16 | 11.5 | 23   | 10   |
| 12.05.069 | 25.5 | 16 | 13.3 | 22.5 | 12.5 |

- Material: Polímero
- Acabamentos: Preto (015) e Branco (005)