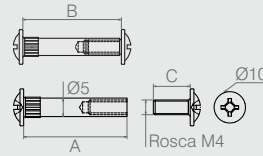


**Parafuso União 3/16" Plástico 09.08.033**

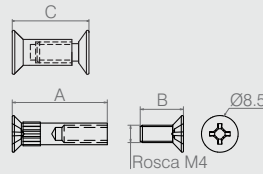
- Materiais: Polímero e Aço
- Acabamento Haste: Zinco Branco (411)
- Acabamentos: Preto (015) e Branco (005)



**Parafuso União com Flange Tabela**

- Material: Aço
- Acabamentos: Zinco Branco (411) e Níquel (421)

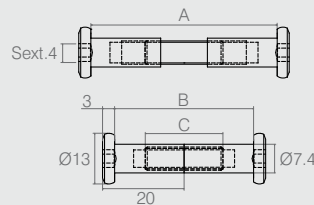
Código	A	B	C
09.08.097	14	14 a 20	10
09.08.070	22	22.5 a 28	10
09.08.099	22	24.5 a 30	12
09.08.071	28	28.5 a 34	10
09.08.127	28	30.5 a 36	12
09.08.100	28	33.5 a 40	16
09.08.142	28	41.5 a 47.5	22
09.08.137	28	48 a 54	30



**Parafuso União Tabela**

- Material: Aço
- Acabamentos: Zinco Branco (411) e Zinco Amarelo (413)

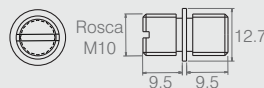
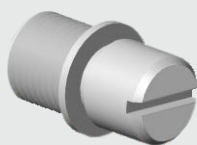
Código	A	B	C
09.08.072	22	10.5	24.5 a 29
09.08.136	22	12	25.5 a 30
09.08.139	22	14	27.5 a 32
09.08.141	22	16	30 a 34
09.08.073	27	12	29.5 a 34.5
09.08.134	27	20	38 a 43
09.08.084	22	25	38 a 43
09.08.086	27	25	43 a 47



**Parafuso União Tabela**

- Material: Aço
- Acabamentos: Zinco Branco (411) e Zinco Preto (412)

Código	A	B	C
09.08.058	46	34	M6x20
09.08.146	51	39	M6x25



**Parafuso União 09.08.051**

- Material: Aço
- Acabamento: Zinco Branco (411)