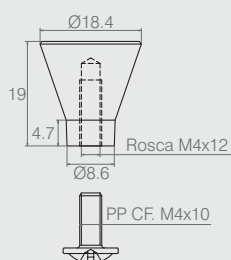


**Puxador Vitória**

03.02.036

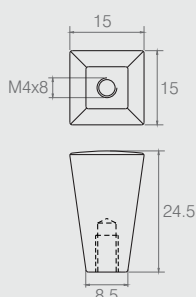
- Material: Polímero
- Acabamento: Branco (005)



**Puxador**

03.02.024

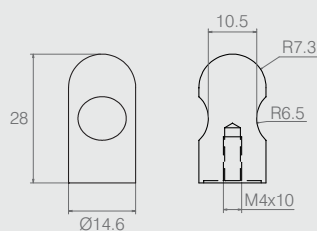
- Materiais: Alumínio e Aço
- Acabamento: Polido Brilho (201)



**Puxador Cônico**

03.07.001

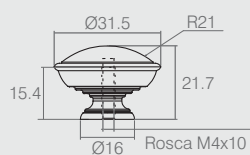
- Material: Zamac
- Acabamentos: Cromo (400) e Steel (423)



**Puxador Cilíndrico**

03.02.017

- Material: Zamac
- Acabamento: Steel (423)



**Puxador**

03.02.034

- Material: Zamac
- Acabamento: Ouro Oxidado (442)