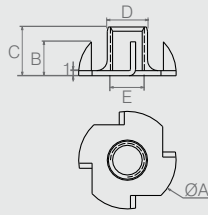
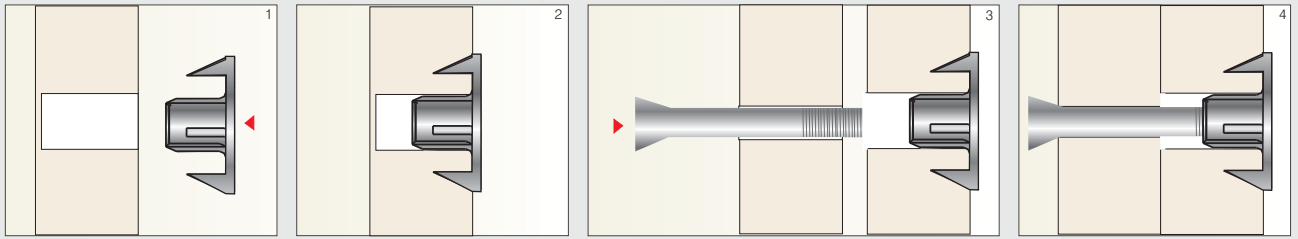


Aplicação Porca Garra

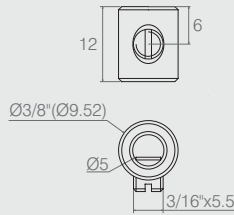


Porca Garra

Tabela

Código	ØA	B	C	ØD	E (rosca)
09.03.049	23	8	11.5	9.5	5/16"
09.03.057	23	8	11.5	9.5	M8
09.03.053	19.7	7	10	7.7	1/4"
09.03.056	19.7	7	10	7.7	M6

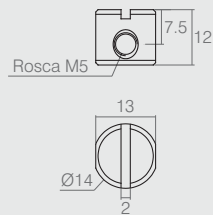
- Material: Aço 1.06
- Acabamentos: Zinco Branco (411), Zinco Amarelo (413) e Sem Acabamento (901)



Presilha

08.01.193

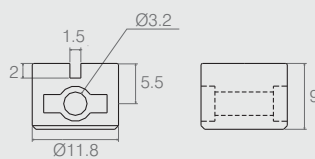
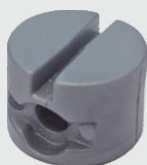
- Material: Aço
- Acabamento: Zinco Branco (411)



Porca Cilíndrica Ø14x12

09.03.186

- Material: Zamac
- Acabamento: Sem Acabamento (901)



Porca Cilíndrica 12x9mm

09.01.022

- Material: Polímero
- Acabamentos: Alumínio (001), Branco (005) e Preto (015)