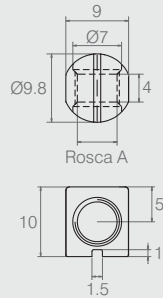


Porca Cilíndrica Ø12x12mm

09.01.028

- Material: Zamac
- Acabamento: Sem Acabamento (901)



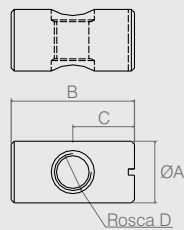
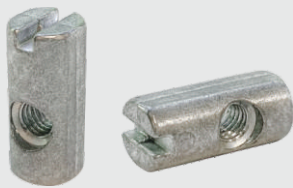
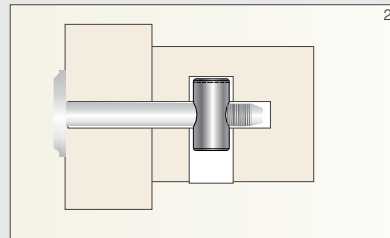
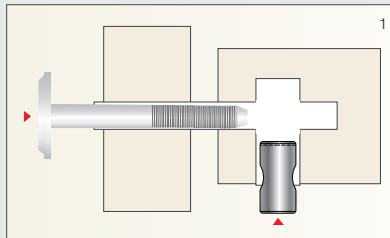
Porca Cilíndrica Ø10x10mm

Tabela

Código	A (rosca)
09.01.037	1/4"
09.01.073	M6

- Material: Zamac
- Acabamento: Sem Acabamento (901)

Aplicação Porca Cilíndrica

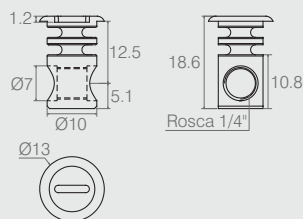


Porca Cilíndrica

Tabela

Código	Fenda	ØA	B	C	D (rosca)
09.03.187	Simples	9.5	20	12	M5
09.01.098	Cruzada	10	20	10	M5
09.01.050	Philips	10	20	10	1/4"
09.01.011	Philips	10	20	10	M6
09.01.082	Simples	10	13	8	1/4"

- Material: Zamac
- Acabamentos: Zinco Branco (411), Zinco Amarelo (413) e Sem Acabamento (901)



Porca Cilíndrica com Cabeça

09.01.105

- Material: Zamac
- Acabamento: Níquel (421)