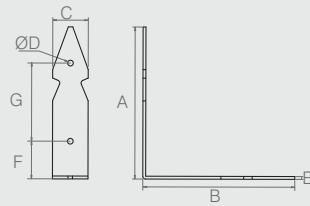


Cantoneira de Fixação

08.02.019

- Material: Aço 1.2
- Acabamento: Zinco Branco (411)



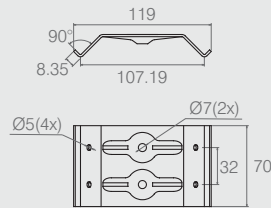
Cantoneira Tipo Lança

Tabela

Código	A	B	C	ØD	E	F	G
08.02.016	119	119	40	4.5x6 (2x)	1.2	81	--
08.02.014	107	107	25	4.0 (4x)	1.9	26.5	55
08.02.079	53	53	25	4.0 (2x)	1.5	34.5	--

*Furo Oblongo

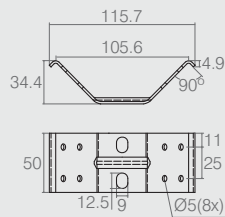
- Material: Aço
- Acabamento: Epóxi Preto Fosco (604) e Ouro Velho (432)



Cantoneira para Mesa

04.08.055

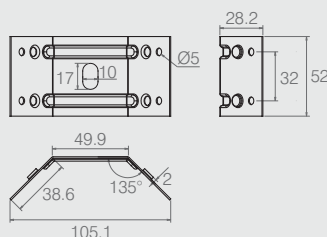
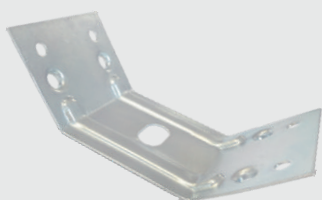
- Material: Aço 1.9
- Acabamento: Zinco Branco (411)



Cantoneira

04.08.220

- Material: Aço 1.9
- Acabamento: Zinco Branco (411)



Cantoneira com Estampo

04.08.465

- Material: Aço 0.9
- Acabamento: Zinco Branco (411)